

# Insert an AutoSoft 30 Infusion Set

for the t:slim X2 Insulin Pump



UNITS OF MEASURE MG/DL

This reference sheet is intended to supplement the instructions included with your AutoSoft™ 30 infusion set. Please refer to those instructions (available for download at [tandemdiabetes.com/support](http://tandemdiabetes.com/support)) for a complete list of warnings and precautions.

1.



To open, pull the red tape to remove the tamper-proof seal and remove the sterile paper.

**CAUTION:** DO NOT use if the seal or sterile paper has been broken.

**NOTE:** Clean the insertion area with an alcohol prep pad or other skin preparation as recommended by your healthcare provider.

2.



Hold the lined indentations on the insertion device with one hand and pull the lid off with the other.

**CAUTION:** If the infusion set is not securely placed in the insertion device with the needle pointing straight ahead, pain or minor injury may occur during insertion.

**NOTE:** You may need to slightly twist the lid when removing it from the device.

3.



Place your fingers on the lined indentations on each side and pull back the spring softly until you hear a click.

The needle protector should lift up or peel off.

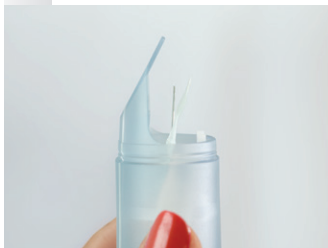
4.



If the needle protector hasn't fallen off, carefully remove it immediately before insertion.

**CAUTION:** DO NOT touch or bend the introducer needle.

5.



Make sure the tape is not stuck onto the introducer needle.

6.



Place your index finger on the top release button and your thumb on the bottom release button of the device. Place the legs flat on the skin to ensure an angle of 30 degrees.

7.



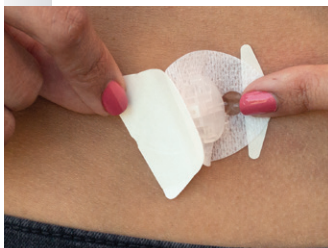
While maintaining a 30-degree angle, gently squeeze the release buttons once to insert the cannula.

8.



To make sure the cannula stays in place while removing the insertion device and introducer needle, gently place your finger on the clear window and gently pull the device straight back.

9.



Keeping the cannula secure with your finger on the clear window, carefully remove the backing paper under the housing and press the adhesive tape gently against your skin.

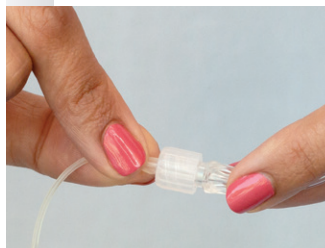
10.



Remove the backing paper under the front end and massage the adhesive tape thoroughly onto your skin.

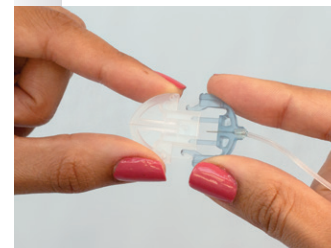
**CAUTION:** DO NOT attempt to straighten the adhesive if curled.

11.

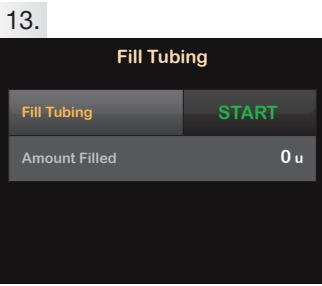


To attach the infusion set tubing to the t:lock™ connector on the cartridge, twist the connector clockwise until tight, then twist another quarter of a turn to ensure a secure connection.

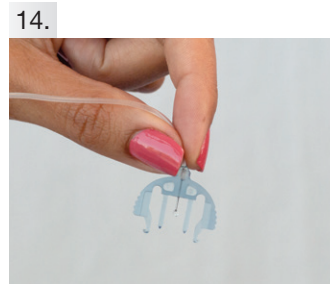
12.



Remove the circular protective cap from connector needle.

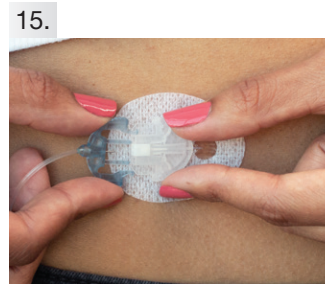


Fill your tubing according to the instructions detailed in the user guide that came with your Tandem Diabetes Care® insulin pump.

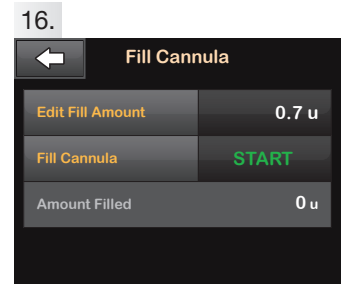


When filling the tubing, hold the connector needle pointing down. Make sure there are no gaps of air in the tubing.

**CAUTION:** DO NOT fill tubing while the infusion set is connected to your body.



After filling the tubing, connect it to the infusion set by holding the ridged sides of the infusion set and push into the plastic cannula housing on your body. You should hear a click.



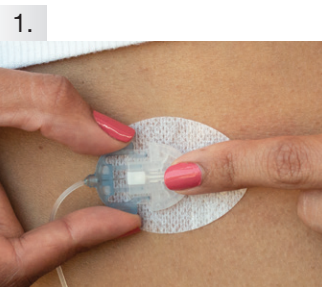
Fill cannula 0.7 units.

Put the lid back on the insertion device before disposing.

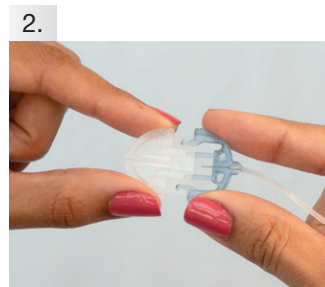
**CAUTION:** Always check your glucose levels two hours after inserting to make sure it's working properly.



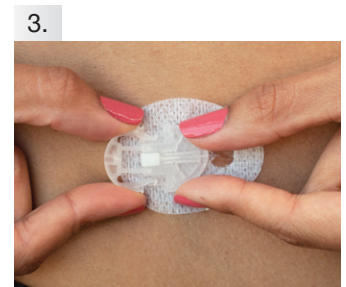
## Temporarily Disconnect Your Infusion Set



Place your finger in front of the cannula housing, gently squeeze the sides of the AutoSoft 30 infusion set and pull the connector needle straight out.



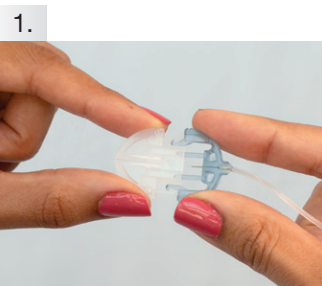
Insert the circular protective cap into the connector needle.



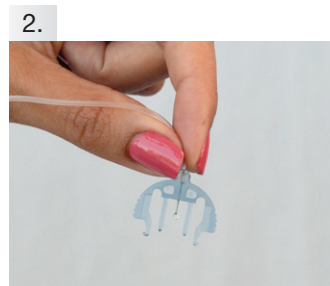
Insert the disconnect cover into the cannula housing.



## Reconnect Your Infusion Set

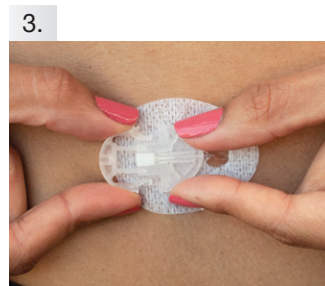


Remove the circular protective cap from the connector needle.

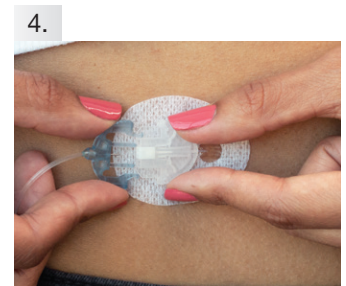


With the needle pointing down, fill the tubing until you see insulin drop from the needle.

**CAUTION:** DO NOT fill tubing while the infusion set is connected to your body.



Remove the disconnect cover from the cannula housing.



Hold the ridged sides of the infusion set and push into the plastic cannula housing on your body. You should hear a click.

t:slim X2 Insulin Pump

**TANDEM**  
DIABETES CARE

(877) 801-6901  
tandemdiabetes.com

CONNECT WITH US ON:



Important Safety Information: RX ONLY. These infusion sets are indicated for the subcutaneous infusion of insulin administered by the t:slim X2™ insulin pump for the treatment of diabetes. These infusion sets are indicated for single use. For contraindications, warnings, precautions, and other important information, please refer to the instructions for use accompanying the infusion sets.

© 2021 Tandem Diabetes Care, Inc. All rights reserved. Tandem Diabetes Care, AutoSoft, t:lock, and t:slim X2 are either registered trademarks or trademarks of Tandem Diabetes Care, Inc. in the United States and/or other countries. All third-party marks are the property of their respective owners. ML-1008718\_A